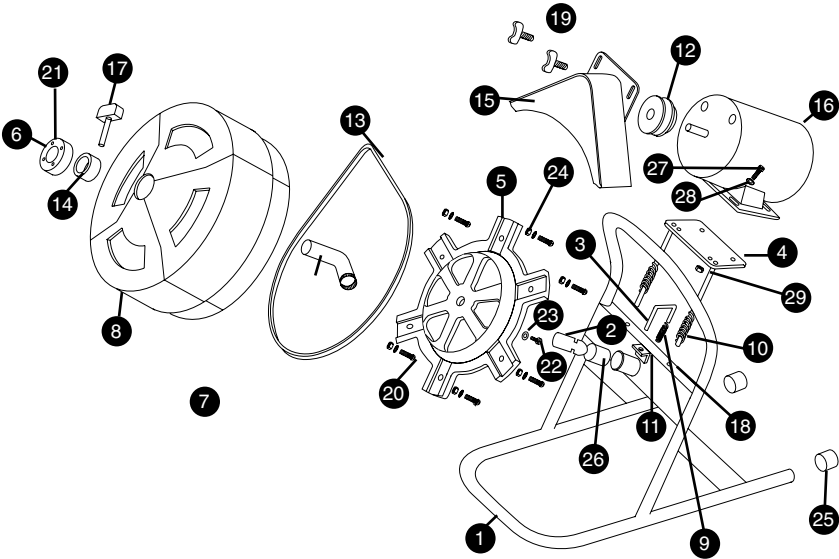
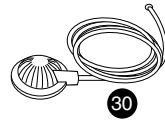


PARTS



REF#	PART NO.	DESCRIPTION
------	----------	-------------

1	850-990400	Frame Assembly
2	401-990444	Drum Drive
3	250-250005	Lock Pin
4	700-007167	Motor Mount Plate
5	500-980400	Hub
6	400-990440	Nose Cone
7	750-016406	Distribution Tube
8	400-990400	Drum
9	650-990440	Spring-Lock Pin
10	650-990441	Spring-Motor Mount (2)
11	401-990025	Locking Shaft Collar-Lock Pin
12	401-400059	Pulley
13	401-044887	Belt
14	401-990124	Locking Shaft Collar Distribution Tube
15	400-430000	Belt Gaurd
16	401-672300	Motor
17	350-990542	Thumb Screw
18	401-830000	Plastic Bushing-Motor Mount (8)
19	350-142003	Wing Nut (2)
20	350-252558	Phillips Head Screw (6)
21	350-142004	BTN. Head Screw (4)
22	350-375161	Socket Head Screw
23	350-375109	Lock Washer
24	350-142040	Lock Nut (6)
25	450-045378	End Cap Plastic (2)
26	401-840000	Bronze Bushing
27	350-142021	Socket Head Bolt (4)
28	350-315000	Lock Washer (4)
29	350-142002	Nut(4)
30	401-990446	Air Actuated Foot Switch
31	350-313125	Lock Washer (9)



Cobra Products, Inc.
1 Warner Court

Swedesboro, New Jersey 08085 USA

Customer Service..... **800-835-2200**

Fax Order Service..... **856-241-1699**

PARTS AND PRICING MAY CHANGE WITHOUT NOTICE